

Blue's IP Buffer quick installation guide

1 Installation requirements

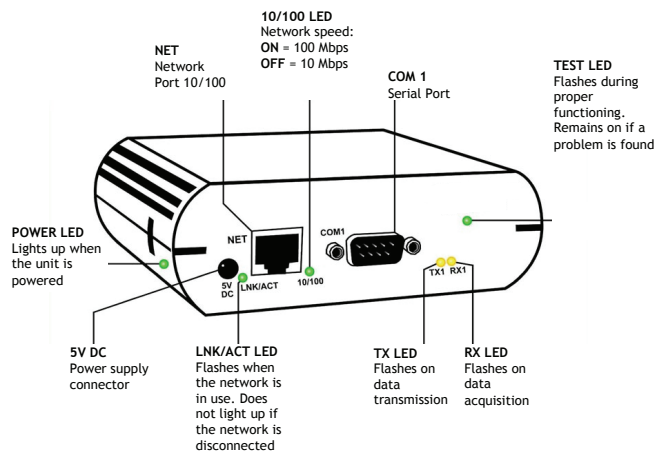
The package contains:

- 1 Blue's IP Buffer (Fig. 1)
- 1 220 V Power adapter
- 1 RJ45 Serial cable
- 1 DB 9Pin Fem / RJ45 adapter
- 1 Gender changer adapter (male/male)
- 1 Ethernet network cable for the network connection
- 1 Crossed Ethernet cable with coloured pins for a pc connection
- 1 CD containing Blue's IP Buffer Explorer software
- 1 Quick configuration guide

Required tools:

- 1 Personal Computer connected to the company network or a PC equipped with an Ethernet card.

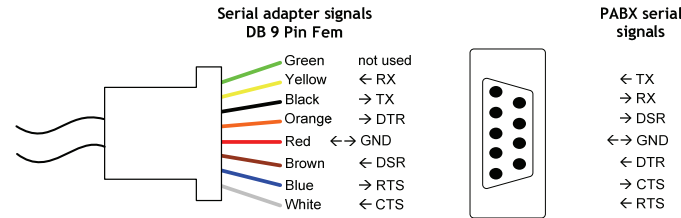
FIG 1. Blue's IP Buffer



2 Connect Blue's IP Buffer to the PBX

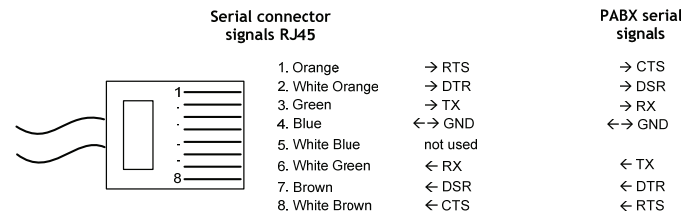
Connect the serial cable provided with PBX system to the COM1 port on Blue's IP Buffer. If the cable is not available, use the cable and adapters provided in the Blue's IP Buffer box. Connect the coloured pins of the DB9 serial adapter the required signals of the PBX (see fig.2) or, alternatively, use the serial RJ45 plug according to the scheme on fig.3.

FIG 2. Serial connection scheme - PBX



Note before connecting the pins, make sure the connectors are placed on the right signals consulting the PBX manual. Once connected, the pins cannot be disconnected. Use the Gender Changer if the PBX is provided with female serial port. If the PBX provides all signals, please, connect only those available.

FIG 3. RJ45 serial connection scheme



Connect the power adapter to Blue's IP Buffer firmly and place a few test calls from any extension of the PBX and make sure the LED RX1 (Fig. 1) on Blue's IP Buffer flashes immediately after the end of each phone call.

Note If the Buffer RX LED does not flash, disconnect the serial cable from Blue's IP Buffer and connect it to a PC. Use Windows Hyper Terminal software to verify if the calls are logged. In case the calls are not logged, verify the serial connection and the PBX settings.

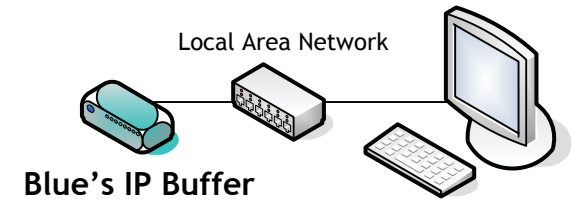
3 Connect Blue's IP Buffer to the company Network

Blue's IP Buffer should be properly configured with the company Network settings, as explained in the next paragraph. In order to perform this operation, please, connect Blue's IP Buffer to the Company Network (Fig 4) and configure it using any PC connected to the network.

Connection to the Company Network

Connect the provided network cable to Blue's IP Buffer NET port and connect the other end of the cable to an available port on the company switch/hub.

FIG 4.

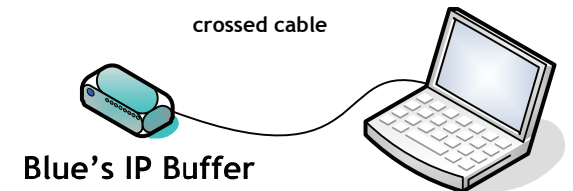


Alternatively, Blue's IP Buffer can be configured by connecting it directly to a PC.

PC direct connection

Connect the provided crossed cable (with coloured pins) to Blue's IP Buffer NET port and to the network card of the PC used for the configuration of the device. Enter the network settings and connect Blue's IP Buffer to the company local network as previously described.

FIG 5.



4 Blue's IP Buffer Configuration

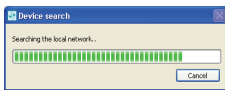
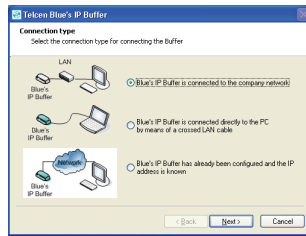
Find the CD inside the package and insert it into the PC CD-ROM. The program will start automatically. Should the program not start immediately, it can be manually started with a double click on the CD-ROM icon and on the file 'BluesIPBufferExplorerAutorun.exe'.

Note the software is also available on www.telcen.it in the Software Download Area

The configuration program will display a welcome window, offering the language selection and the Blue's IP Buffer Explorer start command.

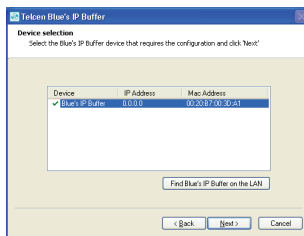
On Blue's IP Buffer Explorer start window, click **Next** and proceed with the configuration. Select the connection used to connect to Blue's IP Buffer.

Select the first option if Blue's IP Buffer is connected to the company network (default configuration). Select the second option if Blue's IP Buffer is connected directly to a PC, in this case all the configuration settings of the company network must be entered manually. Select the third option if Blue's IP Buffer has been previously configured and its IP address is known.



The first two options will automatically search Blue's IP Buffer

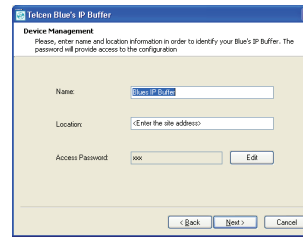
After the search, all Blue's IP Buffer devices connected to the network will be displayed. Select the Blue's IP Buffer that requires the configuration and click **Next**.



Note If several Blue's IP Buffers are connected to the network, the units can be identified using the MAC Address displayed in the window and printed on the lower part of the device.

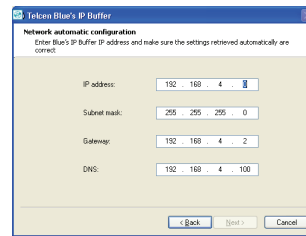
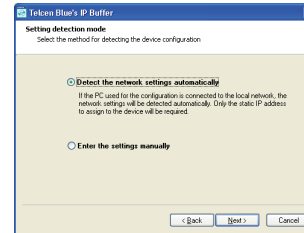
The new window will display the device settings.

In this window, a name and location can be assigned to Blue's IP Buffer in order to identify it, should several units be installed. Click **Next** to proceed.



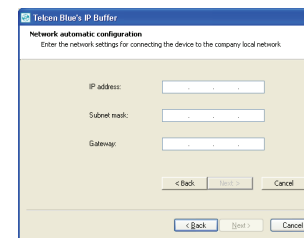
IMPORTANT It is recommended not to modify the unit access password or, should the modification be necessary, please, store the password in a safe place. Should the password be lost, a new firmware will have to be loaded onto the unit with an on-site operation.

Select the option **Automatically retrieve the network settings** should Blue's IP Buffer be connected to the company network.

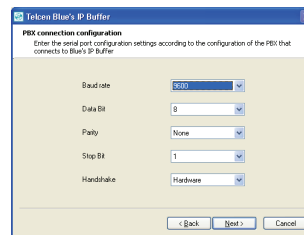


Select **Automatically retrieve the network settings**, to detected the settings of the local network automatically.

Select **Add network settings manually**, the settings will have to be entered manually. Click **Next** to proceed with the configuration.



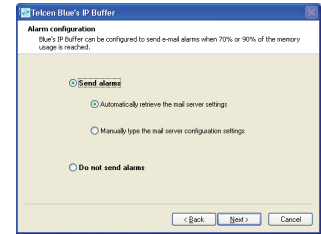
Enter the configuration settings for the PBX serial port.



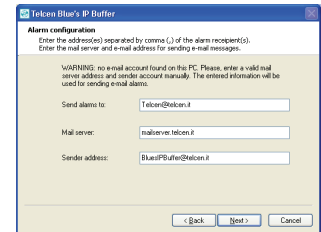
Note Please, make sure the entered settings match those set on the PBX in order to prevent wrong data from being logged.

The unit can be also configured as to send alarms via e-mail in case the memory usage reaches 70% and 90%, as to timely intervene to prevent data loss.

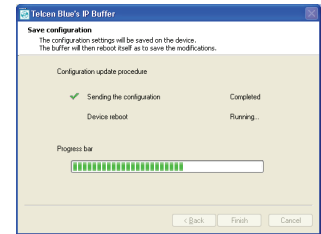
Select **Send Alarms** to configure the alarm settings. Select **Retrieve mail server settings automatically** to detect the mail configuration automatically.



Should these settings not be retrieved automatically, please, enter the parameters manually. Click **Next** to display the settings.



If the settings are correct, please click **Next** to display the **Configuration Summary**. If the configuration is correct, please click **Save**. The configuration can also be exported to a txt file for future reference. Wait until the configuration is saved and that the unit reboots. Click **Finish** to end the configuration.



Please, configure Blue's call management software for the connection to Blue's IP Buffer and make sure call logs are downloaded correctly.

5 Troubleshooting

Please, call our support service on +39.0584.943232 Monday to Friday 8:30 AM - 12:30 AM and 2:00 PM - 6:00 PM CET (GMT +1) or e-mail support@telcen.it.

Thank you for choosing Telcen!